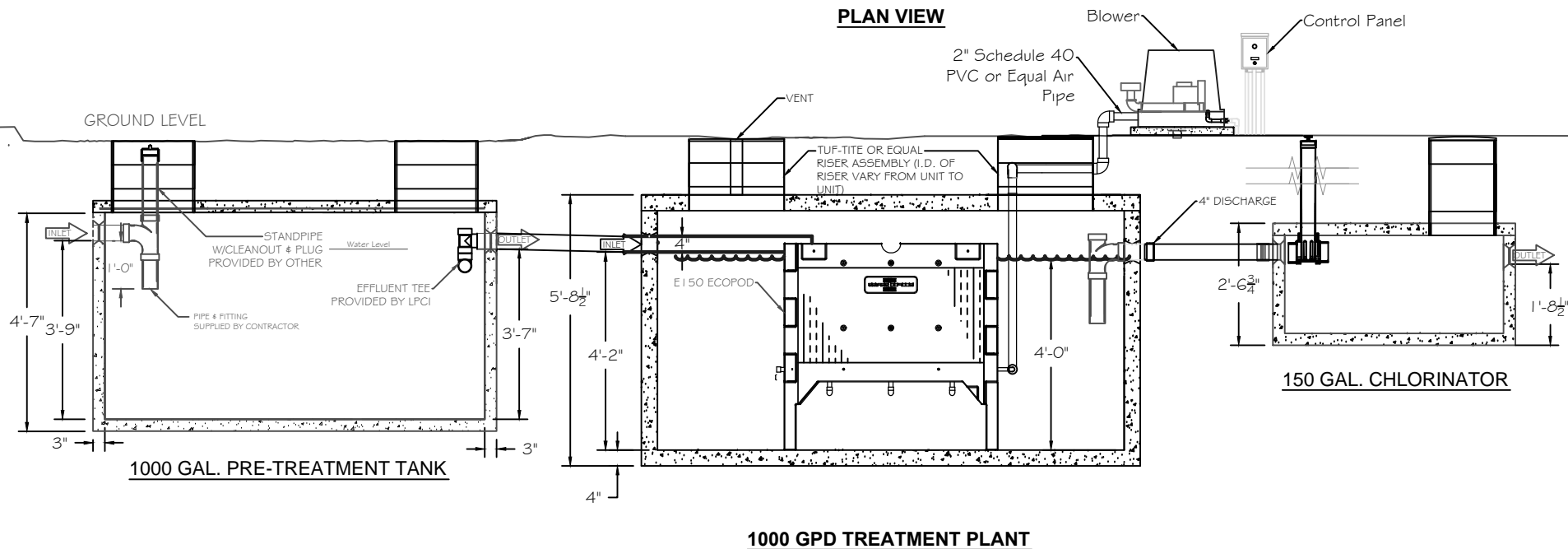


PLAN VIEW



ELEVATION VIEW

SPECIFICATION:

CONCRETE: 4,500 psi concrete (28 days)
 LOAD DESIGN: Non-Traffic (Max Cover = 2')
 TANK SEALS: Meet ASTM 1227-07a
 SEALANT: Sealant use for joints meets or exceed C990 Specification.

NPCA
 CERTIFIED PLANT

TOTAL APPROX. WT:
 24,000 lbs.

DRAWN BY:
 Allen Lee

Tank Type: 1,000 GPD TREATMENT PLANT

LEE'S
 PRECAST CONCRETE, INC.

COPYRIGHT 2019
 LEE'S PRECAST