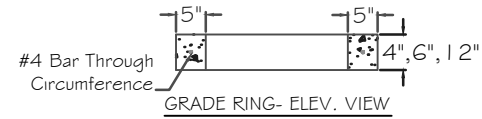
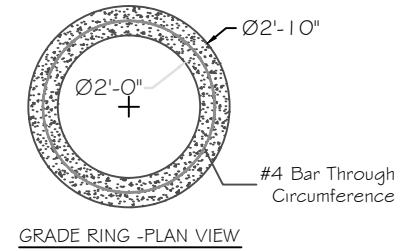


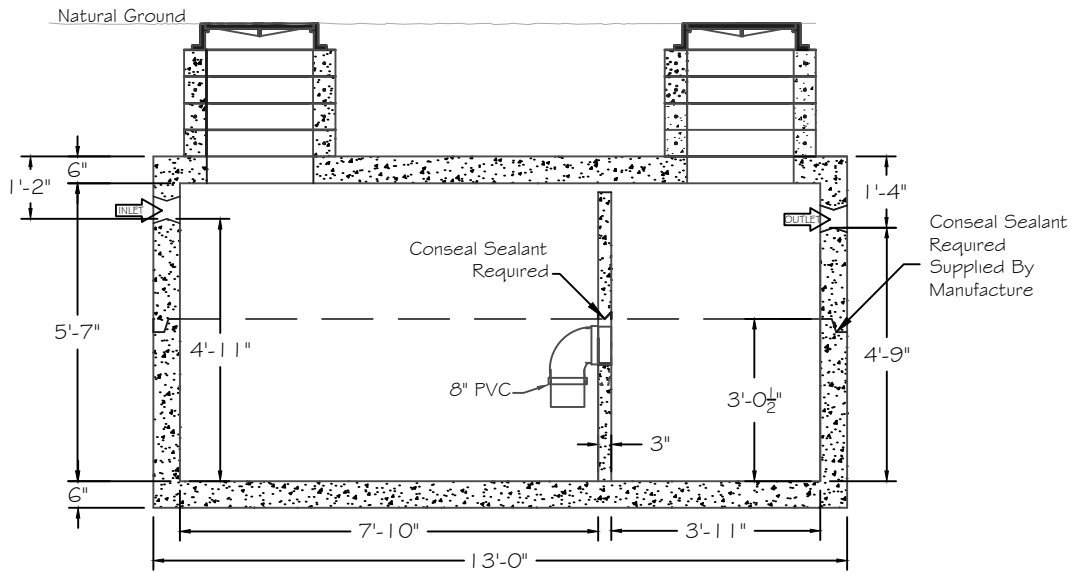
PLAN VIEW



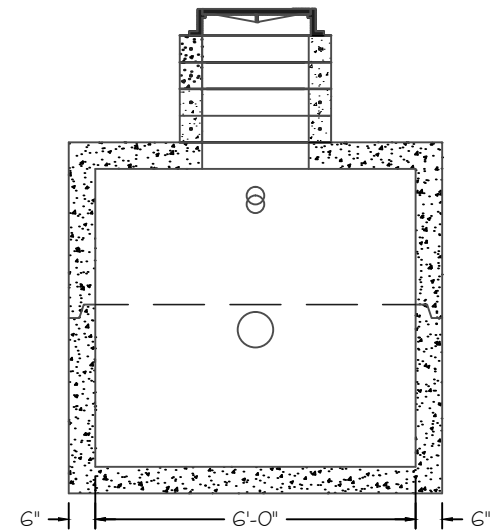
GRADE RING- ELEV. VIEW



GRADE RING -PLAN VIEW



ELEVATION VIEW



END VIEW

**SPECIFICATION:**  
 CONCRETE: 28 DAY COMPRESSIVE STRENGTH = 5,000 psi  
 REBAR: ASTM A-615 GRADE 60  
 LOADS: HS-20  
 PIPE CONNECTORS:- 4" OR 6" CONNECTOR CAST-IN  
 JOINT BUTYL SEALANT: MEETS OR EXCEED C990 SPECIFICATIONS  
 INTERIOR AND EXTERIOR COATINGS AVAILABLE UPON REQUEST



APPROX. WT:  
28,900 lbs.

DRAWN BY:  
Allen Lee

Tank Type: 2,500 GALLON OIL / WATER INTERCEPTOR



COPYRIGHT 2019  
LEE'S PRECAST