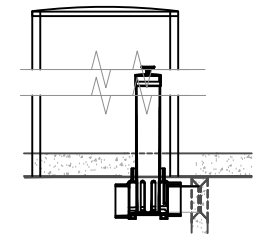
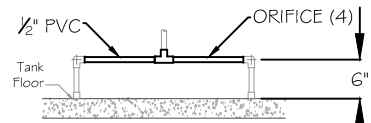


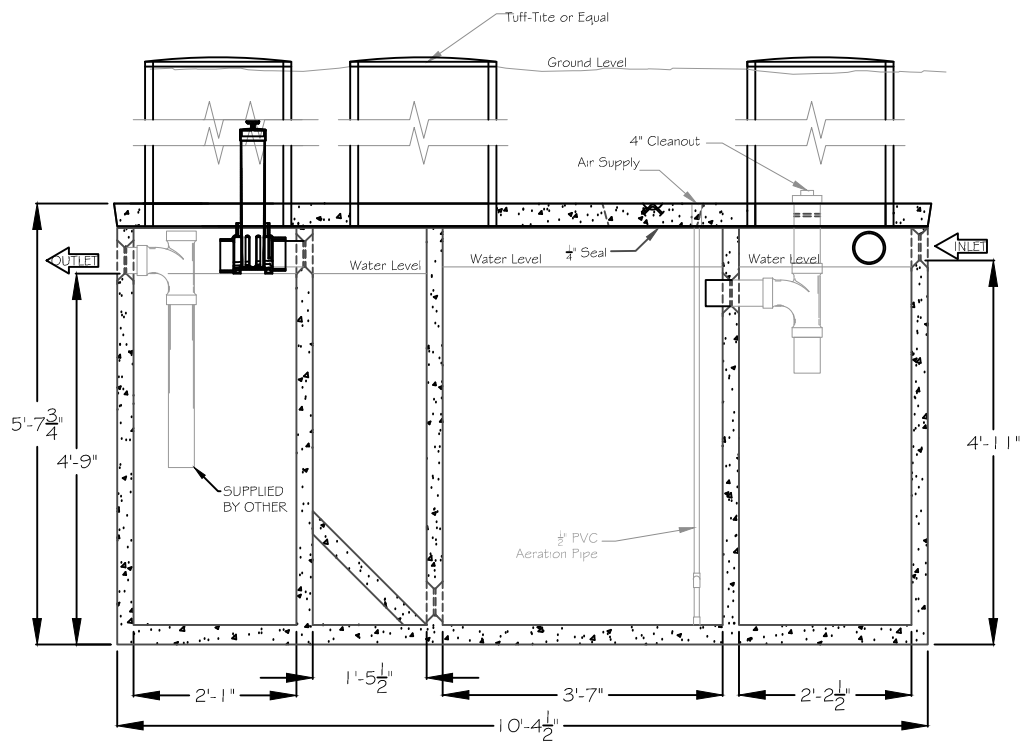
TOP VIEW



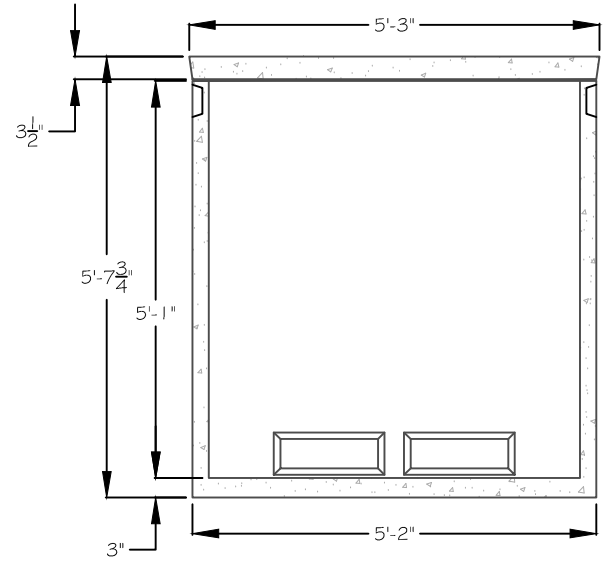
CHLORINATOR DETAIL



AIR DIFFUSER DETAIL




SECTION A



SECTION B

SPECIFICATION:
 CONCRETE: 4,500 psi concrete (28 days)
 LOAD DESIGN: Non-Traffic (Max Cover = 2')
 TANK SEALS: Meet ASTM 1227-07a
 SEALANT: Sealant use for joints meets or exceed C990 Specification


NPCA
 CERTIFIED PLANT
 APPROX. WT:
 12,000 lbs.
 DRAWN BY:
 Allen Lee

Tank Type: 520 GPD TREATMENT PLANT


LEE'S
 PRECAST CONCRETE, INC.

COPYRIGHT 2019
 LEE'S PRECAST