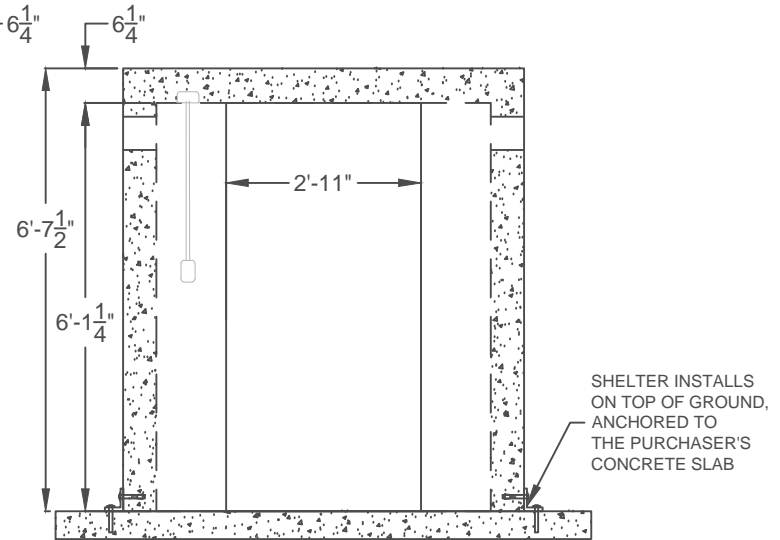
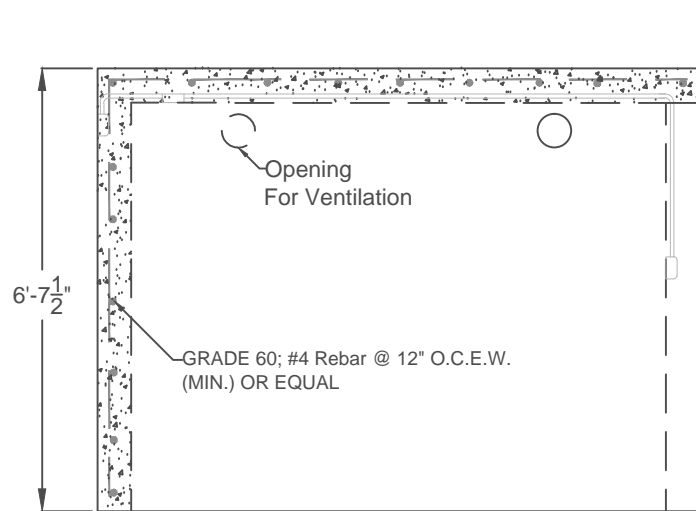


STORM SHELTER PROVIDED WITH:

STEEL DOOR PASSED IMPACT TEST AT TEXAS TECH WIND & SCIENCE (NOT SHOWN)

STEEL DEFLECTORS PLATES OVER 6" OPENINGS FOR VENTS (NOT SHOWN)



SIDE ELEVATION

FRONT ELEVATION

DESIGN DATA
 CONFORMS TO ICC-500/NSSA 2014 AND FEMA 320-2014 GUIDELINES FOR STRUCTURAL STABILITY, AND CAPACITY FOR RESIDENTIAL TORNADO SHELTERS
 WIND SPEEDS: 250 MPH | ROOF PRESSURE: -163 PSF | OCCUPANCY: 8 PERSONS
 GROSS WEIGHT (LB): UNIT - 21,100

**5 X 8
 GARAGE MODEL
 SHELTER**

DATE:

4-5-21

DRAWN BY:

ALLEN LEE

